



# ABACUS 500

**COMUNELLO**  
AUTOMATION

Electromechanical spindle actuators for residential swing gates.  
For leaves up to 5 m (max. leaf weight 220 kg) and up to 500 kg (max. leaf length 2 m).



24 VDC 230 VAC **E** **KIT** **ABACUS 500** For swing leaves up to 5 m / 500 kg

All products in the Abacus line have a one-piece aluminium housing for the mechanical parts and operators which guarantees durability and safety. These products are designed to be long-lasting and perform to the highest standards in all weathers. Highest safety and reliability are guaranteed. The internal gearing is made from innovative materials for quiet movement. Simple to install and maintain.



ARTICLE	ABACUS 500 24V FE E	ABACUS 500 230V FE	ABACUS 500 230V FM E
Voltage	24 VDC	230 VAC	230 VAC
Power consumption	110 W	280 W	280 W
Max. absorption.	5 A	1,2 A	1,2 A
Max. thrust	1800 N	2000 N	2000 N
Standard stroke	446 mm	446 mm	446 mm
Duty cycle	Intensive use	50%	50%
Protection degree (IP)	IP44	IP44	IP44
Insulation class	2	1 (earthing)	1 (earthing)
Working temperature	-20°C / +50°C	-20°C / +50°C	-20°C / +50°C
Encoder	-	-	Yes
No-load speed	21 mm/s	16 mm/s	16 mm/s
Weight	10,7 kg	11,2 kg	11,2 kg



# ABACUS 500

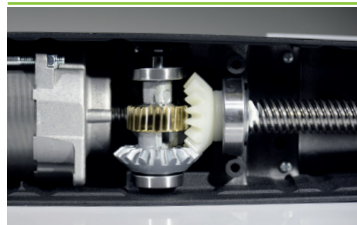
**COMUNELLO**  
AUTOMATION

## STRONG



Monoblock aluminium casing  
Epoxy powder coating for max. resistance to all weather conditions.

## MECHANICAL MADE IN COMUNELLO



Metallic gear reducer and bearings. Multiple start worm screw for smooth movement.

## SAFE



Irreversible motor  
Easy-opening key-operated emergency release mechanism with aluminium handle.

## LIMIT STOPS



Available versions with mechanical or electronic limit switches. Programmable automatic/semiautomatic limit switches, timer and speed reducer.

## RELIABLE



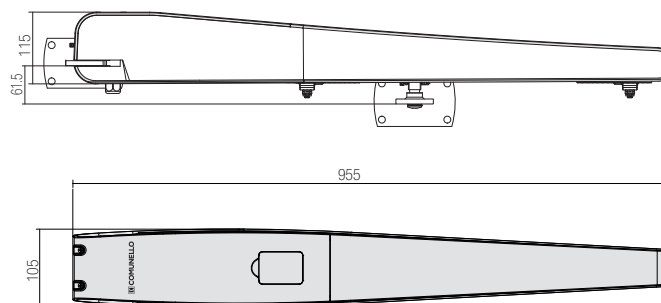
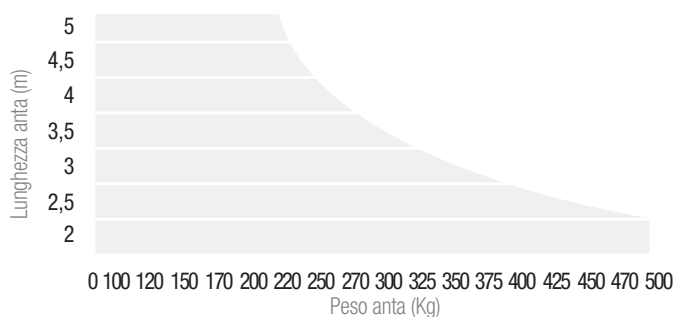
Bronze lead nut for quiet movement even under full load.

## OBSTACLE DETECTION



Optional versions with Encoder for more accurate and safer deceleration.

## OPERATING LIMITS



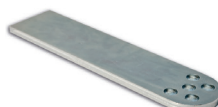
## MAIN FITTINGS



**AC 30**  
OUTDOOR ANTENNA



**AC 70**  
GALVANISED ADJUSTABLE REAR BRACKET



**AC 80**  
GALVANISED LONG REAR BRACKET



**AC 85**  
GALVANISED ADJUSTABLE FRONT BRACKET



**AC 10**  
12 V HORIZONTAL ELECTRIC LOCK



**QUAD 1 / QUAD 2 / QUAD HP**  
ELECTRIC SWITCHBOARD FOR 1 OR 2 OPERATORS



**DART**  
PHOTOCELLS



**SWIFT LED**  
BLINKING WARNING LIGHTS



**VICTOR 2 RC**  
2 CHANNEL, ROLLING CODE REMOTE CONTROL



**INDEX**  
KEY SELECTOR SWITCH



**TACT RADIO**  
DIGITAL SWITCH WITH RADIO CONTROLLED KEYPAD



**MAST 50**  
EXTRUDED ALUMINIUM COLUMN H 50 CM

PLEASE FIND A COMPLETE LIST OF ACCESSORIES ON [WWW.COMUNELLO.COM](http://WWW.COMUNELLO.COM)